

A powerful double for secure bonding



CRB Cera Resin Bond

With the **Cera Resin Bond** system you have the option to securely and durably bond various materials intra and extra orally.

For example, **Cera Resin Bond** can be used for extending porcelain restorations quickly and efficiently with light-curing materials. Moreover, **Cera Resin Bond** combines cold-curing resins with light-curing veneering material, as well as different light-curing veneering composites with each other. Also there are no limits to individualising denture teeth with light-curing veneering material.

These bonds are extremely resistant to moisture and thermal strains.



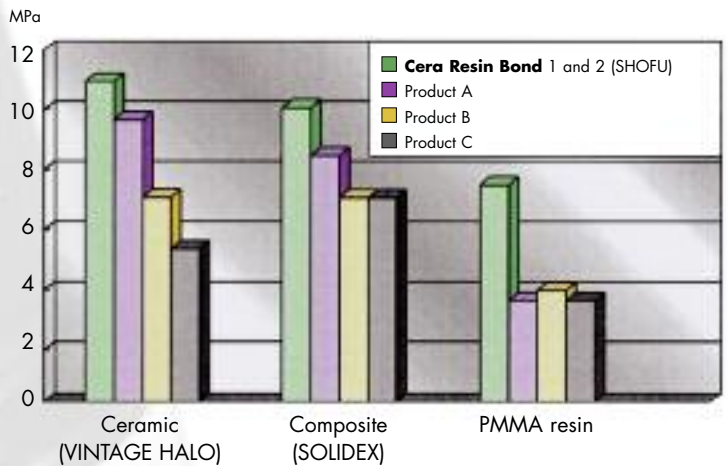
Proven Products for Better Dentistry

Secure bonds without compromise

Cera Resin Bond convinces with an excellent and durable bonding between light or self-curing composites and all ceramic veneering materials.

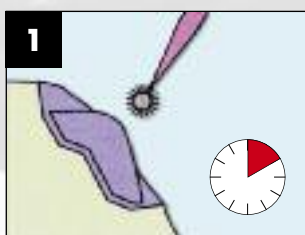
It is easy to handle and suitable for virtually all indications in dental offices and dental laboratories as it can be used intra and extra orally.

Even after longer time of wearing the restoration **Cera Resin Bond** secures a durable bond without compromise.

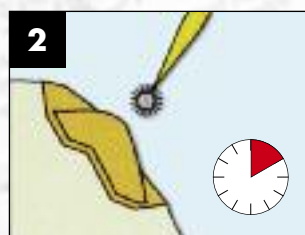


Bonding strength of composite and different materials with **Cera Resin Bond** as well as ceramics / resin-bonding systems of other manufacturers

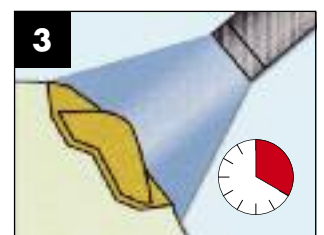
Easy and fast application



Apply **Bond 1** / leave for **10 sec.**



Apply **Bond 2** / leave for **10 sec.**



Light-cure for **20 sec.** / ready for applying composite

Versatile possibilities:

- Intra and extra oral use
- Repair and completion of ceramic crowns and bridges with veneering composites
- Completion of ceramic- and resin teeth with composites
- Secure bonding of self-curing resins to light-curing veneering composites
- Increasing of the bonding strength of high cross-linked acrylic teeth to self-curing prosthetic resins
- Can be combined with **ML Primer** bonding system



CRB Kit
PN 1741



SHOFU DENTAL GMBH
Am Brüll 17 · 40878 Ratingen / Germany
Phone: +49 (0) 21 02 / 86 64-0 · Fax: 86 64-64
E-mail: info@shofu.de · www.shofu.de